



# MANTSINEN 140 HYBRILIFT® **AGILE & EFFICIENT**





# CONSIDER IT LOADED

Combining precision with efficiency, the Mantsinen multipurpose material handling machines are the perfect solution for various operations in ports and industrial terminals. They are suitable for handling any kind of bulk material, scrap, timber and breakbulk. Equipped with the Mantsinen quick coupling system, working with different attachments is easy, safe and efficient.

With more than 60 years of experience in logistics services for heavy industry, Mantsinen has the knowledge of the demands and challenges of material handling in many different applications. The combination of this operational experience and world-class engineering know-how create unique solutions for efficient handling operations. With our deep knowledge, we can optimise your operation and machine configuration.

## **LIFELONG PRODUCTIVITY**

Mantsinen material handling machines are a generational investment, in respect of the machine's life and durability. In many applications Mantsinen material handlers have reached over 50 000 working hours and still counting.

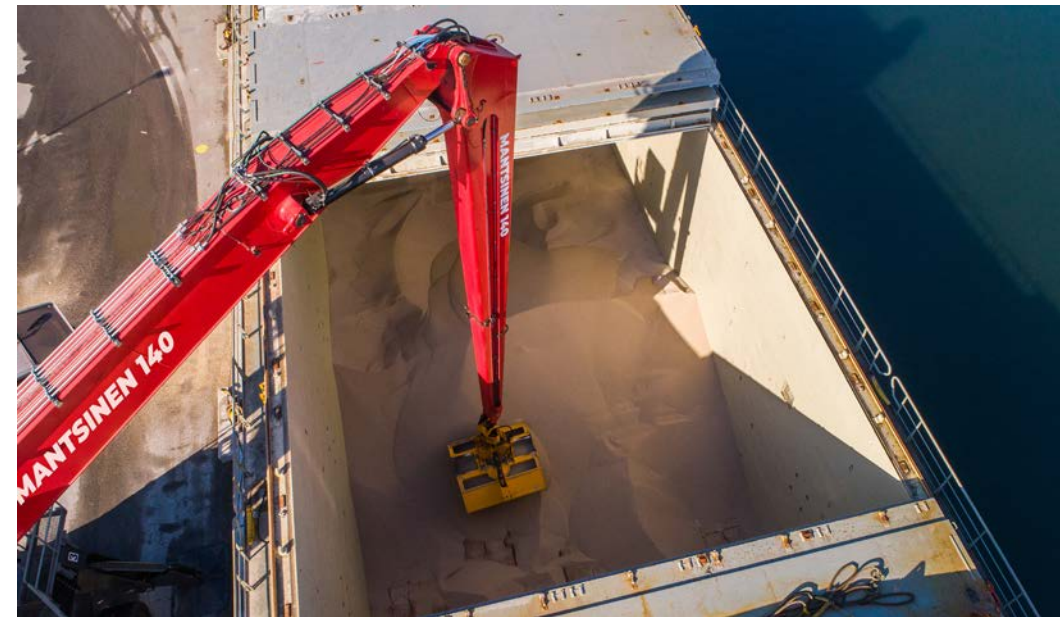
In-house manufacturing of the machines and attachments ensures high quality without compromise. All of the critical structures are thoroughly analysed using the finite element method based on strain gauge tests in real operation.

# SPEED AND PRECISION

Mantsinen 140 is characterized by its energy efficiency and agility. With its economical and intelligent features, this machine makes material handling ever more productive.

The 140 brings together the benefits of the smaller and nimble 120, as well as the big and fast 160, when cost per operated ton makes the difference.

Mantsinen 140 is designed mainly to be used at ports in ship loading and unloading applications, but the machine is also great in pulp and steel mills in raw material feeding and terminal operations.



# RED MACHINES CREATE ENVIRONMENTAL VALUE

**For more than two decades, Mantsinen has paved the way in energy-saving innovations and sustainable solutions.**

## **BREAK-THROUGH DUALPOWER TECHNOLOGY**

Why Choose? Get Both. Mantsinen DualPower is the first ever dual power concept in material handlers. It combines the best features of both electric motors and diesel engines. Resulting in a union of mobility, productivity and advanced environmental friendliness.

The Dualpower technology combines the benefits of an electric machine and the versatility of a diesel machine.

The electric motor offers significantly lower energy and maintenance costs without diesel exhaust emissions and reduced noise emittance. The standard high-performing electric motor and the diesel engine are located side-by-side in the shared engine compartment.

The system is based on a dual motor interface pump gear. The power source can be switched easily with a separation clutch.

## **GET ELECTRIC**

The electrically powered machines offer a cost effective and ecological alternative to diesel powered machines. They provide the same performance level, with zero exhaust emissions, a low noise level and lower energy and maintenance costs. The E-series machines are available configured for local voltages upon request.



## **ENERGY-EFFICIENT, YET EFFICIENT**

We believe in increasing productivity by the means of efficiency. We can lower maintenance costs and increase production yields per unit of input. Improvements in operation and process reliability can also lead to reductions in equipment downtime, shutdowns or system failures.

# **dDualPower™**

## **BY MANTSINEN**

## INNOVATIVE AND UNIQUE ENERGY STORAGE AND RECOVERY SYSTEM

Mantsinen began the testing and development of the Hybrilift already in 2006. The Mantsinen Hybrilift® energy storage and recovery system decreases energy consumption and costs up to 50 %. With Hybrilift, the energy created by lowering of the booms is accumulated and reused, which significantly reduces the fuel consumption and emissions. Once the main boom is lowered, oil is pumped from a cylinder to pressure accumulators where the gas pressure increases, and energy is accumulated.

This stored energy is used to raise the boom and stick. More load will be lifted with less energy. Mantsinen Hybrilift material handlers have smaller diesel engines or electric motors as their traditional counterparts. This improves fuel economy and lowers emissions, as well as reduces service costs.

The patented Mantsinen HybriLift system is unique in its design. The two HybriLift cylinders are connected with pull rods to the far end of the main boom. This arrangement greatly reduces stress on the boom. Additionally, as the HybriLift cylinders work in the opposite direction from the main cylinders, the stress on main boom pins and upperstructure is significantly reduced.



**HYBRILIFT®**  
Reduces CO<sub>2</sub>  
emission down by

**50%**

**HYBRILIFT®**  
Increases energy  
efficiency by up to

**50%**

# EVERYTHING UNDER CONTROL

## MANTSINEN CONTROL SYSTEM (MCS)

The Mantsinen control system is engineered for cost-efficient material handling with today's technology. Its operator friendly user interface runs under an "Only what's important is shown" approach making daily operations easier, while allowing the operator to concentrate on their current task. The adjustable multi-function joysticks for front equipment are extremely ergonomic and comfortable. Electrically controlled proportional functions ensure smooth and efficient operation under all conditions.

Travel and steering are controlled by a onegrip joystick. Rail-mounted machines are driven by pedals. The system has electric end cushioning for the boom,

the stick and the cab elevator to avoid unpleasant dynamic shocks.

### HUMAN-MACHINE INTERFACE

- A Graphic user interface display
- Easy-to-use multifunction control jog
- Operating data and gauges
- Optional functions state information
- On board and remote diagnostics with detailed error description
- Acoustic signal for critical alarms
- Precision mode and heavy lift mode
- Settings for main functions and options
- Error logging
- Instantaneous power consumption measurement
- Periodic fuel or electric power consumption



CONTROL SYSTEM	STANDARD	OPTION
Auto-idle mode	•	
Heavy lift mode	•	
Accuracy mode	•	
Dead man switch on joysticks		•
Automatic clamshell bucket levelling while closing		•
Anemometer with alarm at 25 m/s, slowdown 30 m/s		•
Semiautomatic work cycles		•
Temporary person lift prep		•
Turbo timer		•
Vertical lift		•
Container handling mode		•

# SAFETY WITHOUT COMPROMISES

## MANTSINEN SAFETY SYSTEM (MSS)

Mantsinen machines come equipped with an advanced safety system as a standard. Front equipment, swing and cab elevator are equipped with sensors ensuring online monitoring of the machine operation.

The system includes an overload and stability control, as well as cabin collision prevention with warning and automatic motion cut-off functions. Load, reach

and height information is provided with animation of the machine's real time operation. The attachment menu is a part of the system as well.

The system also enables various advanced features like maximum and minimum operational heights, vertical lift, automatic bucket levelling and load cycle history monitoring.





# LEAD BY DATA

## MANTSINEN INSIGHT™

MANTSINEN INSIGHT™ provides comprehensive information from individual material handling machines to a complete fleet. By following over 150 outputs per machine we will ensure that you keep track of your operations, on-site and remotely – wherever you are. With Insight, you will improve your performance and remain at the leading edge of your business.

MANTSINEN INSIGHT™ enables data storing automatically with access to operational and service information. Insight offers data storage, making the machine's history easily available when needed. In addition to remote machine monitoring, Insight enables a connection to the machine control system as standard. These features combined with the onboard diagnostics ensure the best possible support for all machine-related needs.

MANTSINEN INSIGHT™	STANDARD
Asset reports	•
Productivity/efficiency views	•
Fleet view	•
Visualized sensor data	•
Upcoming services -tool	•
History data	•
Data for dealer/factory support	•
Control system remote access for factory support	•
Global SIM card	•



Machine history



Resale



Service history



Productivity improvement



Machine reports



Immediate data

# STRENGTH IS NOTHING WITHOUT VISION

## STAINLESS STEEL CABIN

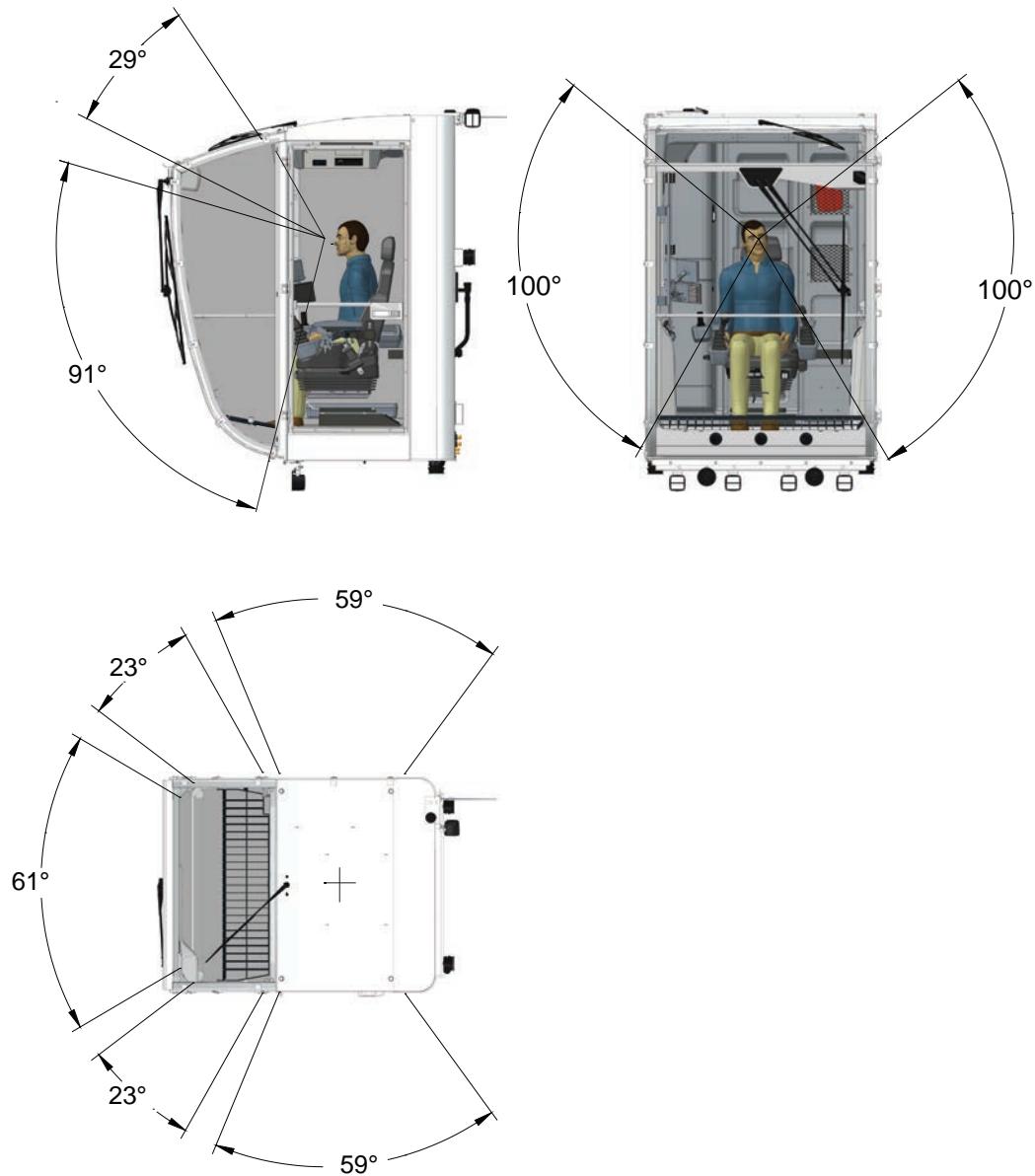
The spacious and modern operator's cabin has excellent visibility with a large one-piece curved windshield and floor window eliminating obstructions in the operator's view. The cabin is made of stainless steel for long lifetime even in the most demanding or corrosive working environments. Sound insulation, low vibration and high-quality interiors create the most comfortable and ergonomic environment for the operator.

The powerful heating and air conditioning, tinted windows and adjustable sunshades make the cabin comfortable in all weather conditions. The windshield wiper has two speeds, an adjustable intermittent function and a washer. There is also a wiper for the skylight.

The operator works in an ergonomically designed environment. All joysticks, control panels and user interface displays can be easily controlled and operated.



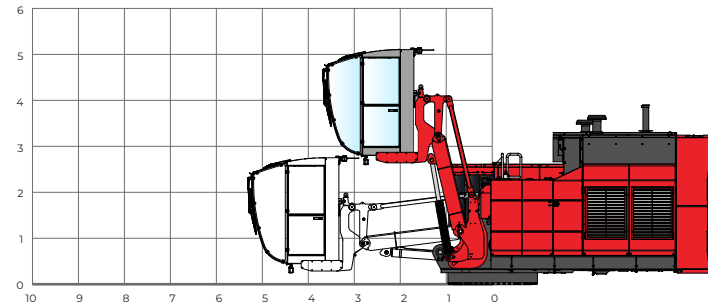
# VISIBILITY FROM CABIN



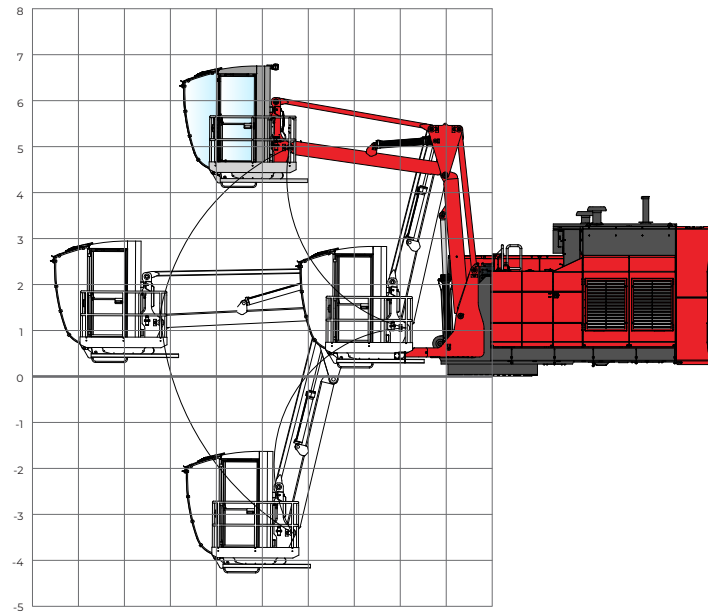
# CABIN ELEVATORS

Mantsinen 140 HybriLift® has two cab elevator options. Robust Mantsinen N2-5000 cab elevator features independent vertical and horizontal movement to position the operator for maximum visibility of loading targets. One arm cab elevator N1-3000, simply brings operator high up.

## N1-3000



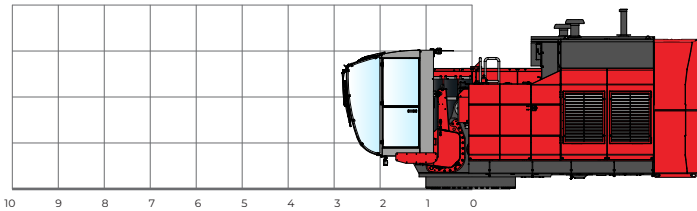
## N2-5000



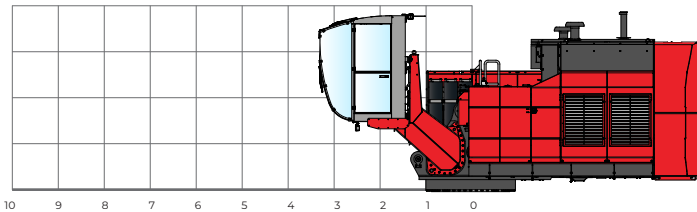
# FIXED CABIN POSITIONS

Mantsinen 140 HybriLift® has three fixed cab positions.

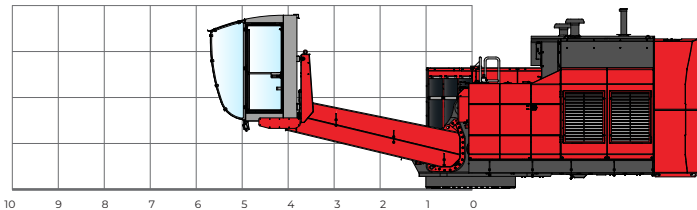
## FIXED CAB POSITION 1.



## FIXED CAB POSITION 2.



## FIXED CAB POSITION 3.



CABIN EQUIPMENT AND OPERATOR'S SEAT	STANDARD	OPTION
Automatic heating and air conditioning with defrost	•	
One-piece curved windshield with heating	•	
Skylight	•	
Tinted window glasses	•	
Sunshades	•	
Folding instructor seat with seatbelt	•	
Signal horn	•	
Rear view mirror	•	
Rescue harness and first aid kit	•	
Bluetooth CD/USB, MP3/WMA receiver	•	
Cup holder	•	
Literature compartment	•	
Two 12 V plugs for chargers	•	
Standard seat	•	
- Air suspension	•	
- Automatic weight adjustment	•	
- Seat belt	•	
- Heating	•	
- Fully adjustable	•	
Seat Be-Ge 3110 FC4 Airvent		•
Seat turntable		•
Cabin protection guards, windshield and skylight		•
Impact proof windshield		•
Sun protection foils, all windows except skylight		•
Emergency exit beam on top of cabin		•
Loudspeaker with gooseneck microphone and pedal		•
VHF-phone preparedness, microphone, pedal and harness		•
230 V AC socket in diesel machine cabin, max current 30 A		•
Alco lock system with SMS function		•
Additional air filtration unit including cabin pressure control		•
Camera with display. Stick or rear-view camera		•
Stick, rear-view and right-view cameras with shared display		•
Camera recording system		•
WiFi camera		•

# DEVELOPED TO GET THE JOB DONE

## UPPERSTRUCTURE

The Mantsinen upperstructure is specifically designed for fast and harsh material handling applications. In-house experience of hundreds of millions of tons in material handling provides a strong base for design, functionality and serviceability.

### POWERLINE

Volvo Penta diesel engines are known in the material handling industry for their high performance, low fuel consumption and durability. The engine, or electric motor is located in a sound-proofed compartment.

### HYDRAULICS

The main hydraulics consist of two variable displacement axial piston pumps and a closed loop swing pump. There is a separate circuit for the rotator, cab elevator and optional

attachment functions as well as for fans.

Efficient filtration and three-micron bleed-off fine filter with water absorption ensures continuously clean and dry oil which increases uptime and extends component and oil lifetime.

Hydraulic oil cooler and radiator are easily accessible for cleaning from the service platform. The fan reversal function cleans the cooler and radiator without interrupting the machine's operation.

### RIGID MAIN FRAME

The rigid main frame and the large diameter pins guarantee a long lifetime for the machine. Robust frames provide solid basis also for slew ring.

### SWING MECHANISM

Mantsinen 140 has a large diameter heavy-duty three

row roller type slewing ring with internal teeth running in grease bath.

Two heavy planetary swing gears have integrated automatic multi disc brakes and the swing mechanism is operating in a closed loop. Connected with state-of-art electric controls the machine swing is extremely smooth, controllable, saves a considerable amount of energy and provides maximum operator performance.

### SERVICE WALKWAYS ALSO INSIDE

The Mantsinen upperstructure is specifically designed for fast and harsh material handling applications. In-house experience of hundreds of millions of tons in material handling provides a strong base for design, functionality and serviceability.

## FRONT EQUIPMENT

A range of straight or curved booms, as well as different boom and stick lengths are available to optimize the operation for maximum productivity. Mantsinen boom and stick structures are designed and analysed with modern FEM-methods based on real operation measurements and long-term practical experience. Their minimum expected lifetime is over two million work cycles under maximum load. Booms and sticks are manufactured in-house under close quality supervision to ensure a long lifetime for these structures.

### MAIN BOOM

The main boom foot and bosses are constructed from steel castings, providing an excellent service life to one of the most critical structural components of the machine. The optimised box structure ensures maximum lifetime without compromise. Strong structure and large pin diameters minimise surface pressures and wear on bushings.

### STICK

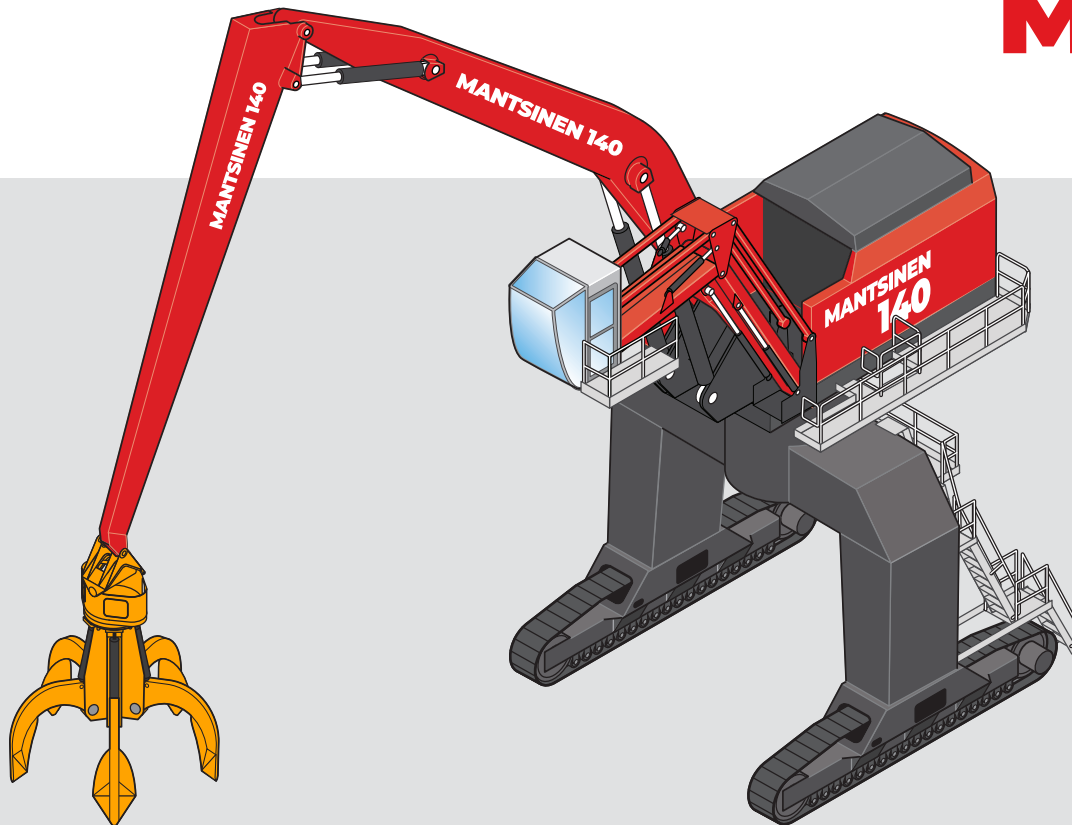
The stick box is constructed from four C-profiles using high tensile steel. The design allows the stick to be constructed with no welding seams in high-stress areas, making it light and extremely durable. Hydraulic lines are well protected inside a U-channel on the sides of the stick. As a consequence of the unique cast stick tip and link design, attachment hoses are not exposed for damages.

# OPTIONS AND STANDARD FEATURES

EQUIPMENT	STANDARD	OPTION
Working lights, 24 V LED; 4 underneath of cabin, 4 at stick, 1 on cab roof	•	
Central lubrication for front equipment and slewing ring raceway	•	
Central lubrication for mobile undercarriage	•	
Bleed-off fine filter	•	
Second pressure adjustment for attachments 250 bar	•	
Beacon and acoustic travel alarm	•	
Surface treatment for C4 Medium according to ISO 12944-2	•	
User and service manuals, 2 printed, 2 on memory sticks	•	
Electronic spare part catalogue, 2 on memory sticks (English)	•	
HYDRAULICS		
Additional attachment function, 200 bar, 90 l/min		•
Second additional attachment function, 200 bar, 90 l/min		•
Magnet generator system 30 kW		•
Magnet generator system 40 kW		•
Additional undercarriage hydraulic function with pedal		•
Biodegradable hydraulic oil		•
FILTRATION		
Large by-pass fine filter with water absorption		•
Attachment line filters		•
Additional fuel filter with heating		•
LUBRICATION		
Automatic lubrication system up to link		•
Automatic lubrication system up to attachment		•
LIGHTS		
Additional 2 lights on boom		•
Undercarriage lights, one in each direction, totally 4		•
Undercarriage pad lights, one directed to each pad, totally 4		•
Travel lights for public roads		•

HEATING	STANDARD	OPTION
Electric heating for engine, hydraulics and cabin. 3-phase inlet socket		•
Automatic battery charger		•
Heating cable 25 m spring reel		•
Pre-heater for engine and cabin, by fuel. Including Multicontrol timer		•
REFILL		
Refuelling pump with 5 m suction hose, 24 V or hydraulic		•
Re-fuelling line 2" from ground level		•
AdBlue 24 V refill pump, harness, pistol & 15 m hose reel for IBC-container		•
GENERAL		
Fire suppression systems		•
Safety access gate, doorbell + operator openable electric lock		•
Emergency stops in undercarriage, 2/4 pcs	•	
Stick corner covers, 4 pcs		•
Stick cover against grapple hits		•
Service lift SWL 500 Kg, 5m swing beam, electric 230VAC.		•
Toolbox in undercarriage, aluminium		•
BACK UP SYSTEMS		
Portable hydraulic unit for swing, main boom, stick, electric or engine driven		•
Diesel powerpack Mantsinen 100 for travel with remote control		•
Lift cylinder and swing release kit		•
SURFACE TREATMENT OPTIONS		
C5 Medium, main component exterior surfaces		•
Customer stickers		•
Custom colour: Front equipment, cover panels, counterweight, cab elevator		•

# MANTSINEN 140R



## CRAWLER GANTRY

Crawler gantry allows significant benefits for effective logistic layout design. The gantry style undercarriage allows trucks or rail cars to pass through. Additionally the machine cycle time and truck waiting times are minimised due to the optimised swing angle. One or two additional fuel tanks within the gantry leg structure are available as an option.

## CRAWLER TRACKS

Long and wide apart tracks create an excellent stability foundation for the machine. Flat track shoes run smoothly on gravel, asphalt or concrete.

### 140R

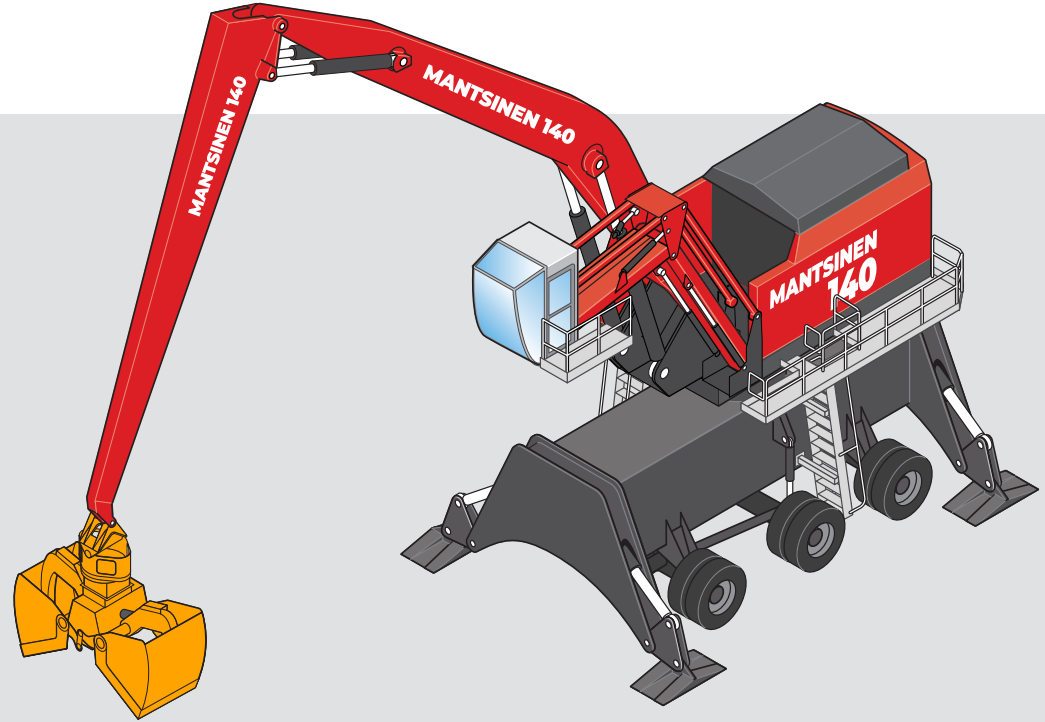
	CRAWLER UNDERCARRIAGE	CRAWLER GANTRY UNDERCARRIAGE
Undercarriage heights	2.5 m, with pylon 3.5 / 4.0 / 4.7 / 5.2 / 6.3 m	6.5 / 7.0 m / 8.0, with pylon 8.0 / 8.7 / 9.2 m
Track gauge	7 040 mm	7 040 mm
Track length	8 090 mm	8 090 mm
Track shoes	1 050 mm flat	1 050 mm flat
Travel speed	Max 3.3 km/h	Max 3.3 km/h
<b>OPTIONS</b>		
Additional fuel tank	1 x 2 000 l or 2 x 2 000 l	1 x 2 000 l or 2 x 2 000 l

# MANTSINEN 140M

## RUBBER TYRE

The three axel rubber tyre undercarriage provides great mobility in this machine size class with reduced axel loads. The four-wheel drive and steering provides a good drawbar pull and facilitates operation on uneven surfaces.

Four individually controllable outriggers permit a full 360° lifting sector with rated loads on firm and even underfoot conditions. Standard 1350 × 1500 mm stabilizer pads are equipped with spherical bearings to adapt to the ground and to reduce ground pressure. Optional 1500 × 2000 mm pads available to reduce ground pressure even more.



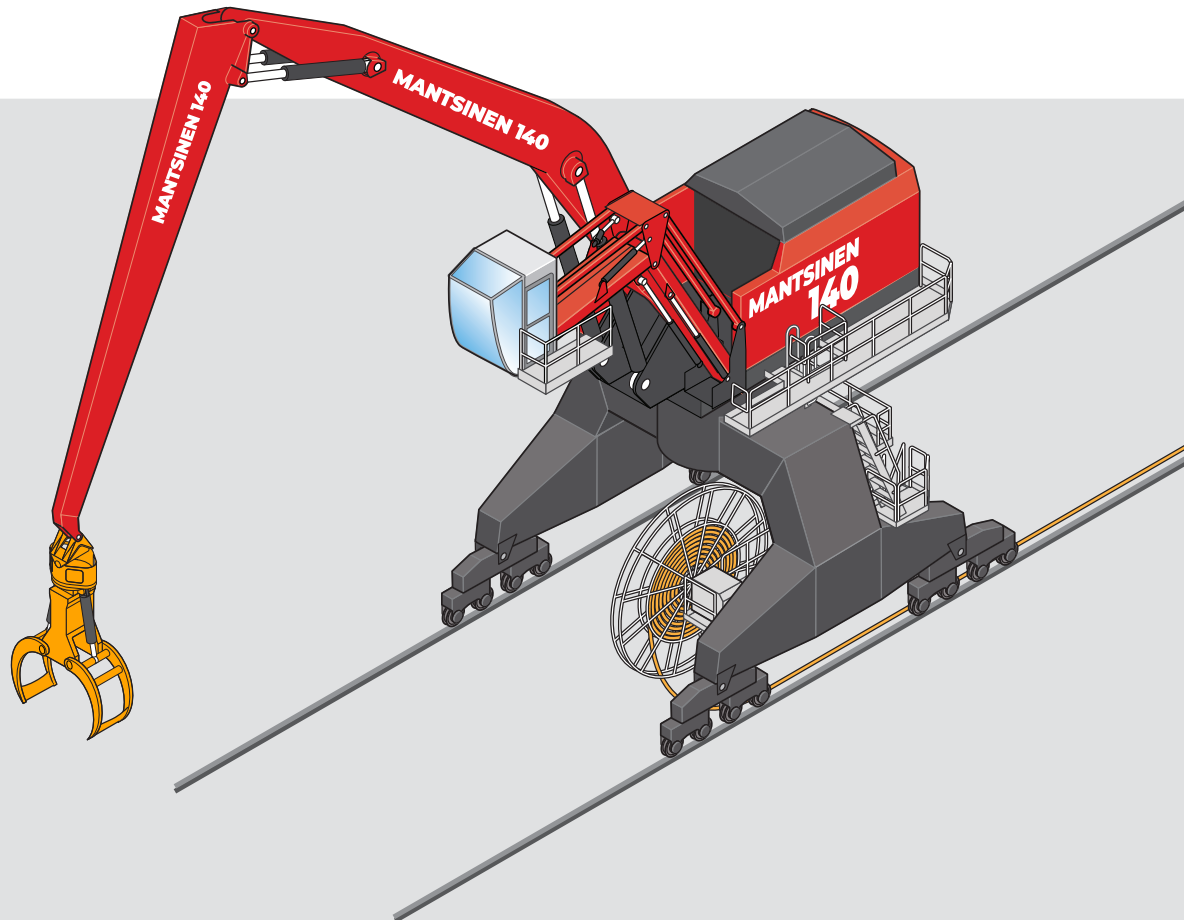
## 140M

	MOBILE UNDERCARRIAGE	MOBILE GANTRY UNDERCARRIAGE
Undercarriage heights	3.2 m, with pylon 4.2 / 4.7 / 5.4 / 5.9 m	6.6 / 8.0 m with pylon 8.8 / 9.3 m
Tyres	12 × 16.00-25 solid rubber	12 × 16.00-25 solid rubber
Drive speed	Max 5 km/h	Max 5 km/h
Stabilizer pads (w x l)	1 350 x 1 500 mm	1 500 x 2 500 mm
<b>OPTIONS</b>		
Large Pads (w x l)	1 500 x 2 000	
Additional fuel tanks	1 x 1 500 l	1 x 1 500 l

## RUBBER TYRE GANTRY

Rubber tyre gantry undercarriage combines the benefits for both logistic layout design as well as mobility. Gantry type undercarriage allows trucks or rail cars to pass through. Also cycle time can be minimized due to the optimised swing angle.

# MANTSINEN 140S



## RAIL MOUNTED

Rail undercarriage can be tailored around existing rails. Number of wheels can be optimised to match permissible rail loads. There are  $\varnothing$  400 mm or  $\varnothing$  630 mm wheels available for different rail profiles. Hydraulic planetary wheel drives provide smooth travel and keep the machine steady throughout operation. The machine can be easily adapted to pull a hopper on rails. Rail cleaners, buffers and storm clamp are all available as options. Depending on gantry width the undercarriage allows one or more rail wagons to pass through. Both diesel and electric versions are available for a rail mounted machine.

## FIXED

Fixed undercarriage can be optimised using differing gantrys or pylons. The machine, equipped with diesel engine or electric motor can be adapted to existing quay or pontoon.

# TECHNICAL SPECIFICATIONS

## FRONT EQUIPMENT

BOOM STRAIGHT OR CURVED (m)	STICK (m)	HORIZONTAL REACH (m)
12.5	9.0	21.4
12.5	10.0	22.4
13.5	11.0	24.3
14.5	12.0	26.3
15.5	13.0	28.2
16.5	14.0	30.2

## DIESEL ENGINE

Volvo Penta	TAD1385VE 405kW Stage V / Tier 4f TAD1345VE 394 kW Stage II / Tier 2
Displacement	12.8 l
Number of cylinders	6
Electric system	24 VDC, alternator 150 A / 24 V, batteries 2 x 225 Ah / 12V

## ELECTRIC MOTOR

Motor type	355 kW IEC cast iron frame squirrel cage motor, 1500 rpm / 50 Hz, 1800 rpm / 60 Hz
Voltages	380 to 690 V. Medium voltages upon request with transformer

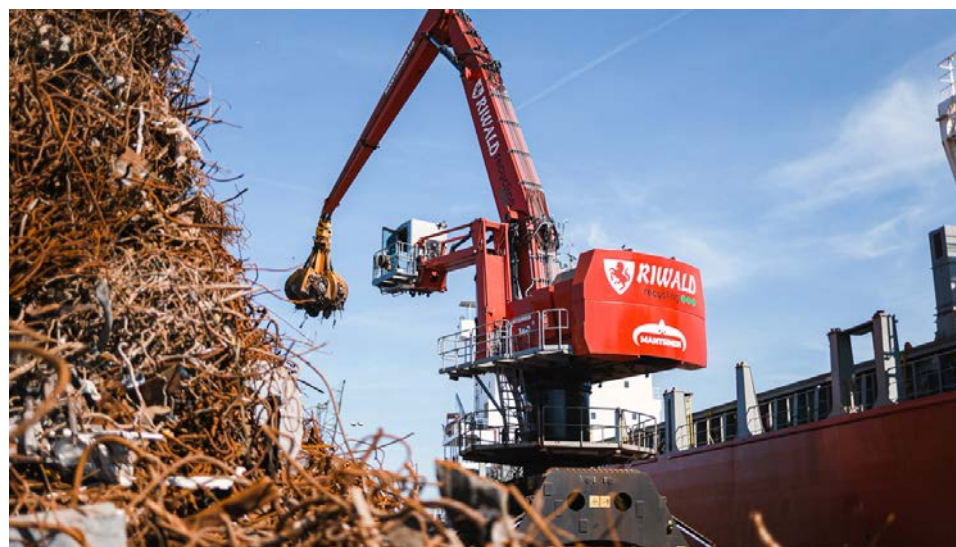
Specifications subject to change without prior notice. The photographs and/or drawings in this brochure are for illustrative purposes only. Refer to the Operator's Manual for instructions on the proper use of this equipment.

## HYDRAULIC SYSTEM

HybriLift® energy recovery system	Equivalent to 210 kW engine power
Oil flow, front equipment and travel	4 x 420 l/min
Operating pressure, front equipment	330 bar
Operating pressure, travel and Heavy Lift mode	350 bar
Oil flow, swing	410 l/min, closed loop system
Operating pressure, swing	270 bar max
Max swing speed	4,7 rpm max
Swing torque	285 kNm

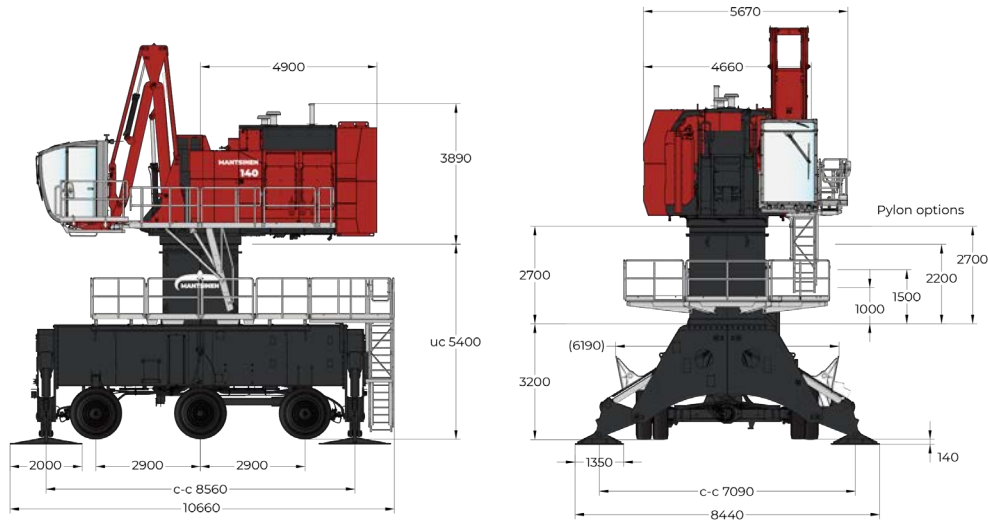
## REFILL CAPACITIES

Hydraulic oil	1 200 l net volume
Fuel tank	1 500 l
Engine oil	36 l
AdBlue tank	160 l for Stage V / Tier 4f diesel

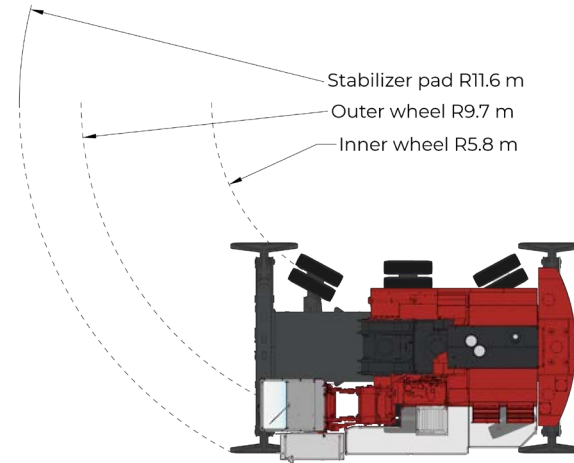


# MAIN DIMENSIONS FOR 140M

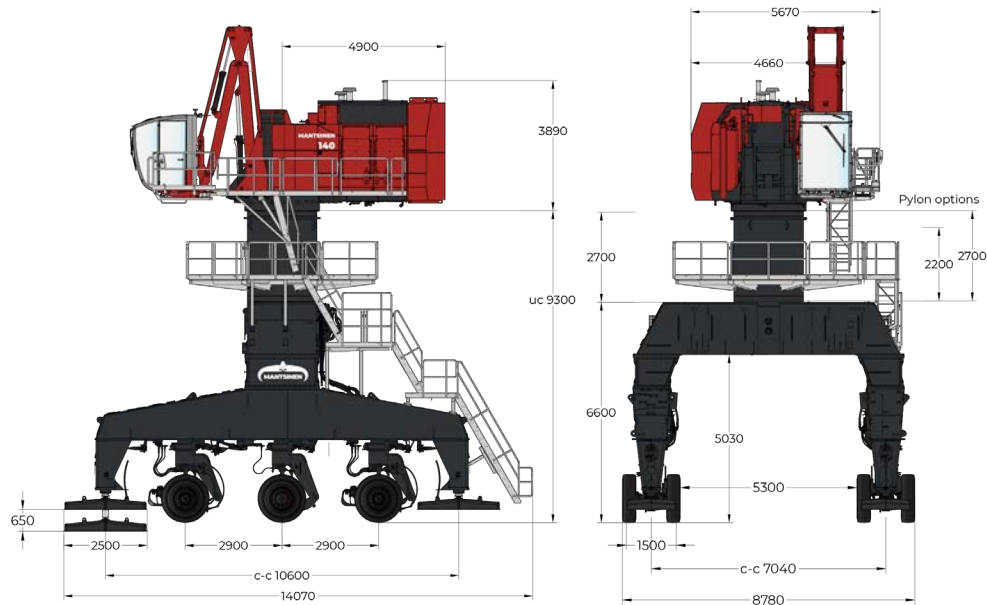
## MOBILE UNDERCARRIAGE



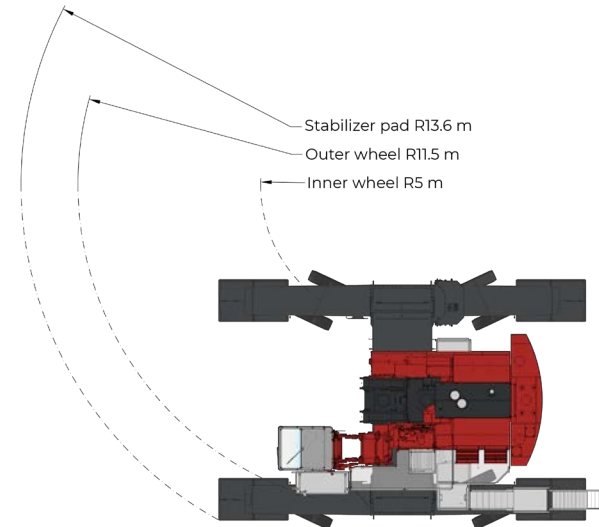
## TURNING RADIUS FOR MOBILE UNDERCARRIAGE



## MOBILE GANTRY UNDERCARRIAGE

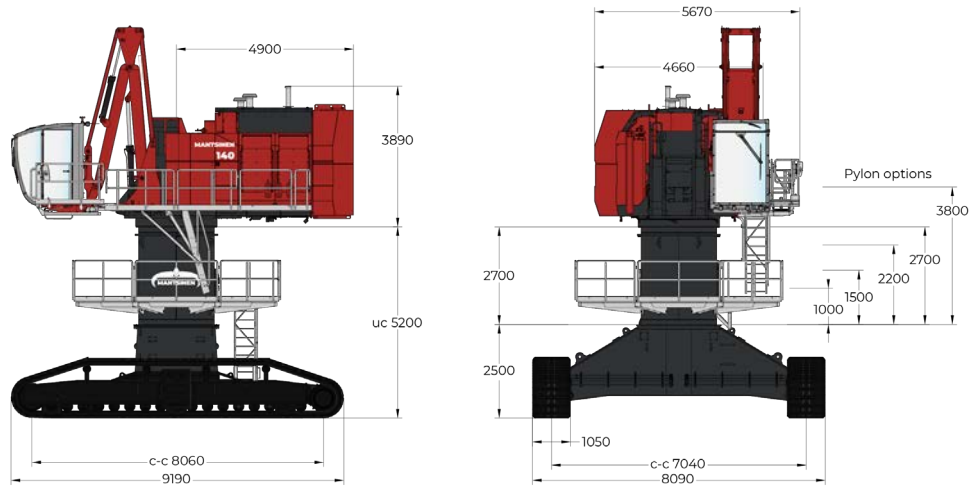


## TURNING RADIUS FOR MOBILE GANTRY UNDERCARRIAGE

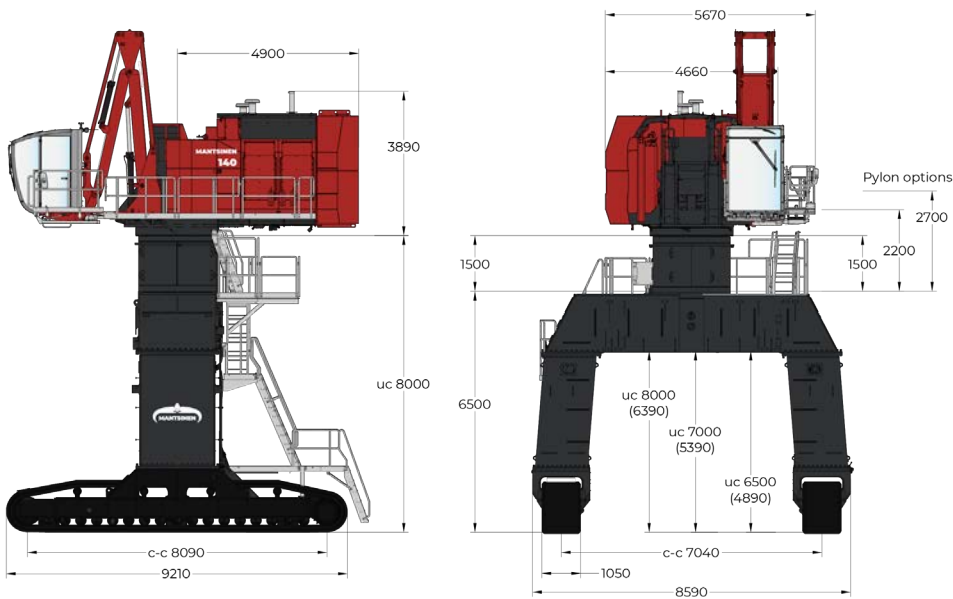


# MAIN DIMENSIONS FOR 140R

## CRAWLER UNDERCARRIAGE



## CRAWLER GANTRY UNDERCARRIAGE

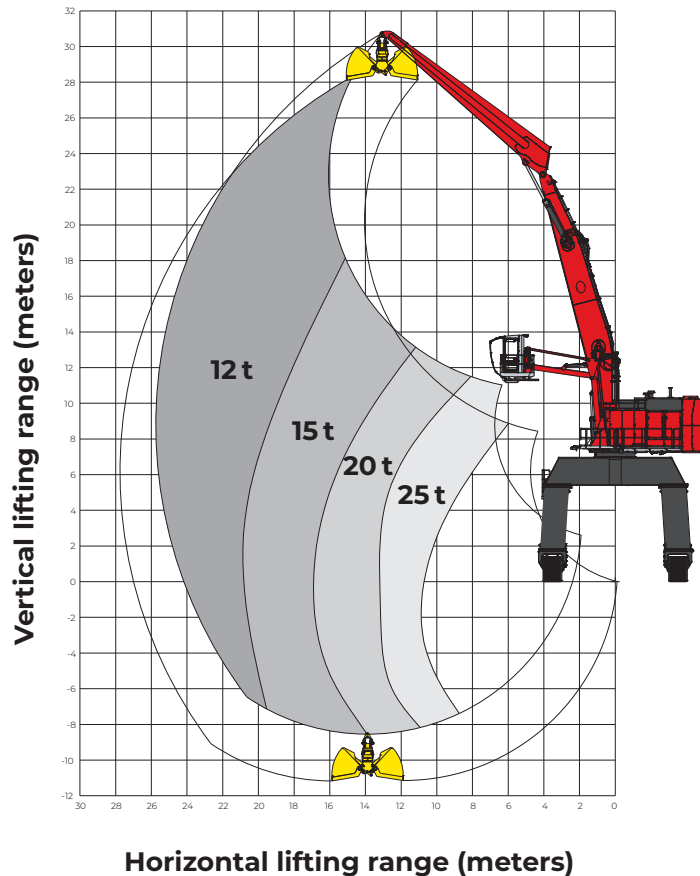


# REACH FOR PRODUCTIVITY

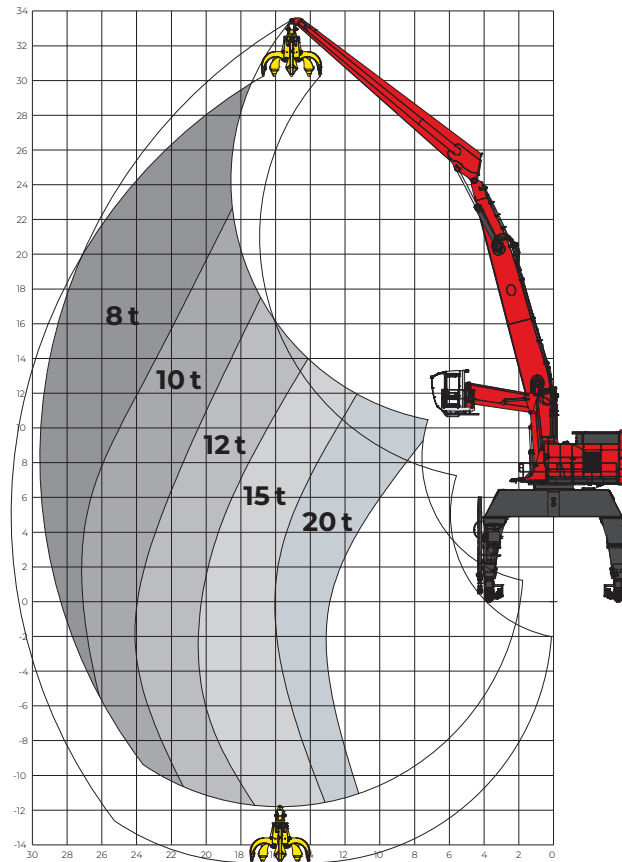
## MANTSINEN 140 HYBRILIFT®

Contact your Mantsinen representative ([www.mantsinen.com/en/sales/](http://www.mantsinen.com/en/sales/)) for specific load diagrams for your operation.

Lifting capacity range with 14,5 m curved main boom and 12 m stick

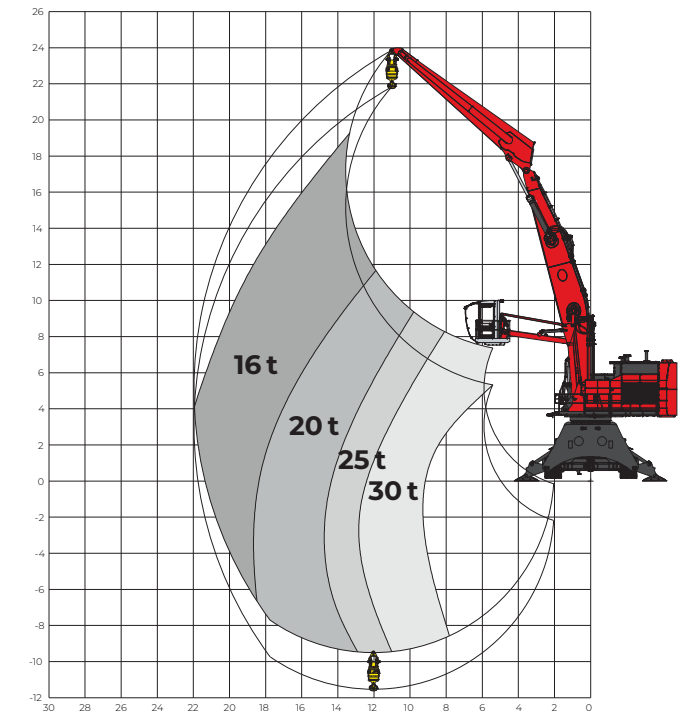


Lifting capacity range with 16,5 m curved main boom and 14 m stick



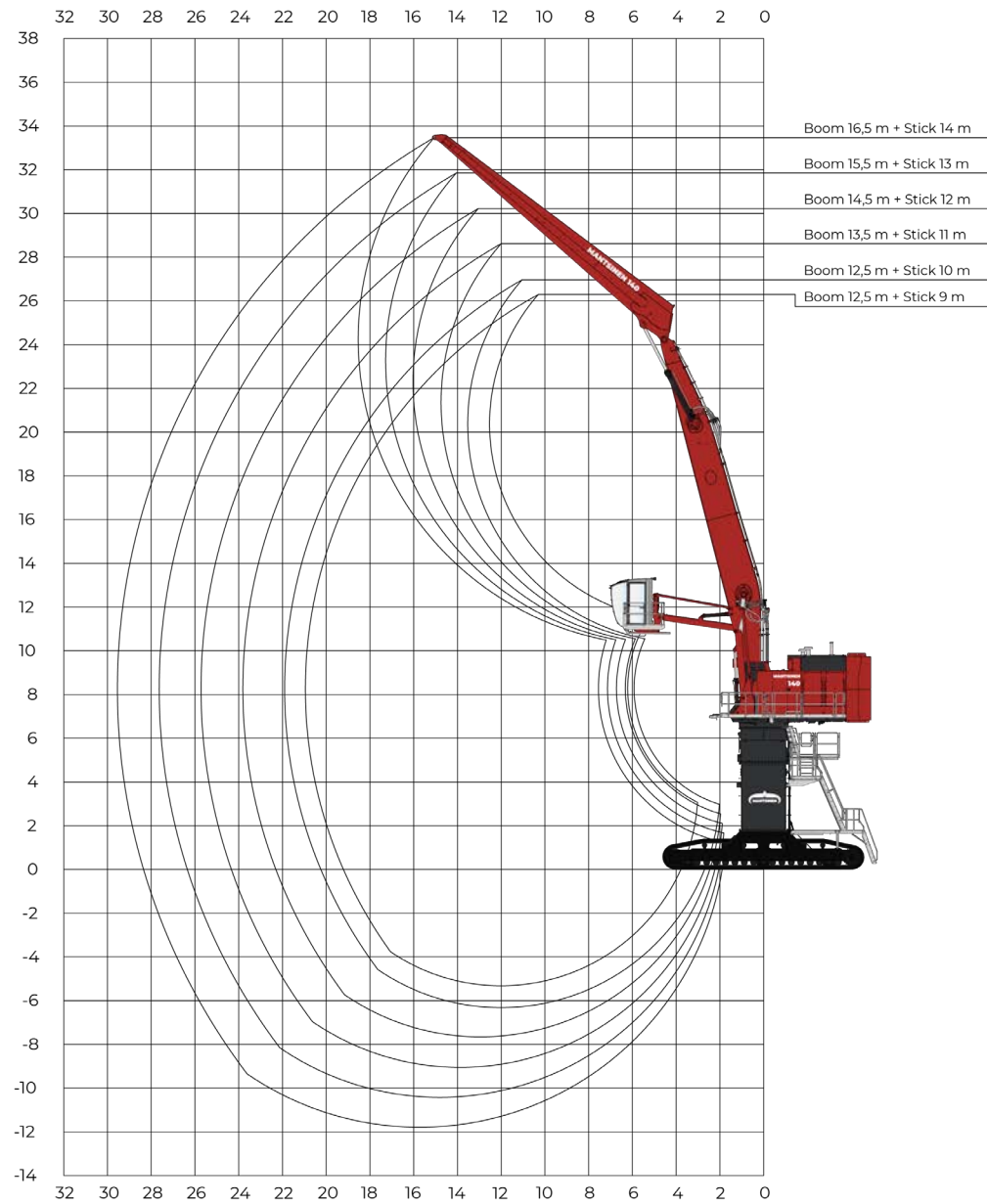
## HEAVY LIFT

Lifting capacity range with 12,5 m curved main boom and 10 m stick

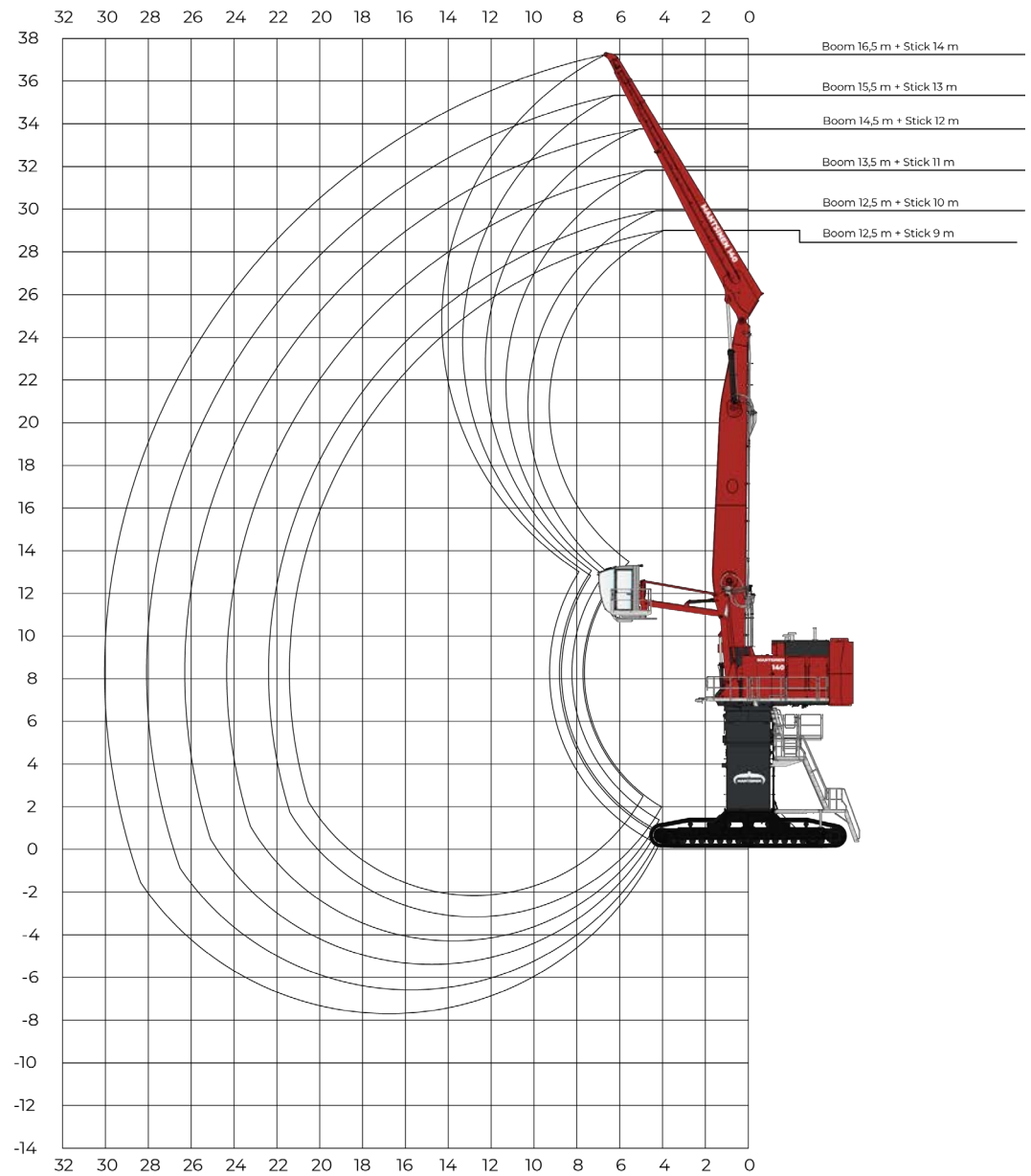


# REACH WITH DIFFERENT BOOM AND STICK CONFIGURATIONS WITH 10,5 M UNDERCARRIAGE

## CURVED BOOMS



## STRAIGHT BOOMS



# MAXIMUM PRODUCTIVITY

## ALWAYS THE RIGHT ATTACHMENT FOR THE JOB

Mantsinen offers a wide variety of attachments to optimize productivity for every operation. Semi-automatic attachments for example for big bags, pallets, and lumber bundles ensure an efficient and safe operation. Fully automatic attachments for example for handling pipes or pulp bales maximise production with minimal labour. Customised attachments are available on request.

Attachments can be equipped with a fixed rotator or with a separate quick coupling system. In both cases the hydraulic hoses from the machine to the attachment are routed directly through the rotator link. The rotator swivel can be equipped with two to six hydraulic lines and optional electric slip ring column.

The Mantsinen hydraulic quick coupling enables fast and safe attachment changes. It takes only a few minutes to swap from one attachment and operation to another.



# MANTSINEN

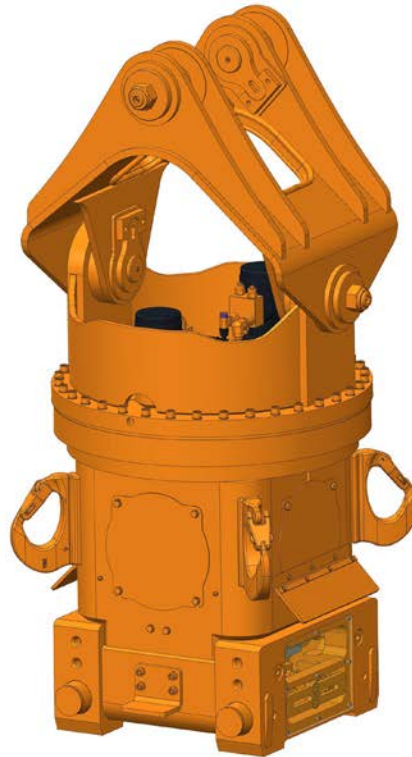
# AUTOMATIC QUICK COUPLER

The Mantsinen Automatic Quick Coupler (MCA) increases efficiency and safety. It enables a quick change of attachments automatically from the operator's cabin - completed in just two minutes!

The lightweight, cost-efficient and robust solution makes material handling more flexible and faster. The MCA comes in two sizes: smaller MCA30 (SWL 30 t) for Mantsinen 60-160 machines and larger MCA60 (SWL 60 t) for Mantsinen 200 and 300.

Both use the same adapter; you can cross-use attachments for both coupler sizes. Additionally, adding hydraulic, electrical or can-bus connection points allows connecting to a multitude of different attachments.

The MCA can be equipped with hydraulic, electric and can-bus connections. Available as retrofit solution for older machines and attachments.



**SCAN THE QR CODE AND SEE  
IT IN ACTION**



*Utilizing Mantsinen attachments together with the Mantsinen material handling machines provides a clean package minimizing the chances of hydraulic hoses and electrical wires getting snagged during the operation, as all of the connections are routed through the open end of the stick and through the openings on the link and rotator packages.*



## **THE STRONGEST LINK IN THE GLOBAL LOGISTICS CHAIN**

Mantsinen provides more efficiency, speed and capacity for our customers in global logistics chain, operating with heavy and basic industry raw materials and semi-finished products. We are the hands-on frontrunner in material handling.

## **MANTSINEN GROUP LTD OY**

Väläkankaantie 3, 80400 Ylämylly, Finland | [www.mantsinen.com](http://www.mantsinen.com)



Edition: 4/2026

Painomateriaali: LumiSilk. LumiSilk on silkkipintainen puuvapaa täyspäälystetty taidepainopaperi.

Valmistaja: Stora Enso Printing and Reading, Oulu Mill

Dealer area